

No.	Items	Model	Unit	Qty
2.1、 Live cattle killing and bleeding equipment unit				
1.1	Live cattle hydraulic ritual halal killing box	QE-C103-I	Set	1
<p>Which used in Islamic Halal religion cattle abattoir for fixed and killing, detail data as following:</p> <p>1)-Design principle: Hydraulic</p> <p>2)-Rated voltage/Phase/Frequency: 380V/3P/50HZ</p> <p>3)-Power: 5.5+2.2Kw</p> <p>4)-Capacity: 40-45cattle per hour</p> <p>5)-Working pressure: 4.0Mpa</p> <p>6)-Dimension: 2400*2300*2370mm (L*W*H)</p> <p>7)-Weight: 2200Kg</p> <p>8)-Flip degree: 180°C</p> <p>9)-Components and material:</p> <ul style="list-style-type: none"> ✓ Hot galvanized steel main frame ✓ Hot galvanized steel surrounded panels ✓ Hot galvanized steel button plate and carcass collection grid ✓ SS304 head clamping device ✓ Polyethylene board side plate and neck fixed plate (PE, thickness: 15mm) ✓ Cloth-type rubber hydraulic oil pipe ✓ Hydraulic pressure station and controlling box 				
1.2	Live cattle killing fixed platform	QE-C106-II	Set	1
<p>Which main used to fixed front of the killing box for live cattle killing,main data as following:</p> <p>1)-Dimension: 1600*1000*800mm (L*W*H)</p> <p>2)-Component and material:</p> <ul style="list-style-type: none"> ✓ Hot galvanized steel support column (D: ϕ 159mm) and main frame (60*40*2mm) ✓ Aluminum alloy support plate (Thickness: 3mm) and ladder ✓ SS304 handrail ✓ Anti-skid fiberglass grating (Square: 30mm*thickness 30mm) ✓ SS304 hand washing bin and knives sterilizing device (Heating: Electric) 				
1.3	Cattle carcass vertical hoist	QE-C109-I	Set	1
<p>Which main used to cattle carcass to convey rail for bleeding, main data as following:</p> <p>1)-Rated voltage/Phase/Frequency: 380V/3P/50HZ</p> <p>2)-Power: 3Kw</p> <p>3)-Hoisting ability: 2000kg</p> <p>4)-Lifting height:6M</p> <p>5)-Lifting speed:8m/min</p> <p>6)-Max capacity: 40 Heads per hour</p> <p>7)-Component and material:</p> <ul style="list-style-type: none"> ✓ Electric hoist ✓ SS304 automatic hanging device ✓ Heavy hook ✓ Low pressure control switches 				
1.4	Cattle blood collection tank	QE-C115	Set	1

Which main used for cattle blood collection, main data as following:

- 1)-Dimension: 3000*1000*500mm(L*W*H)
- 2)-Component and material:
 - ✓ SS304 Square tube(38*38*2mm)
 - ✓ SS304 plate(2mm)
 - ✓ SS304 adjustable foot
 - ✓ Sewage pipe and blood collection pipe



1.5	Cattle bleeding shackle	QE-C114	Set	10
------------	--------------------------------	----------------	------------	-----------

Which main used to tie cattle feet for bleeding, main data as following:

- 1)-Length: 1000mm
- 2)-Max loading weight: 2000kg
- 3)-Component and material:
 - ✓ Hot galvanized steel hanger and roller
 - ✓ SS304 bleeding shackle



1.6	Cattle carcass manual convey rail (Tube-rail)	QE-C110-II	M	9
------------	--	-------------------	----------	----------

Which used to convey cattle carcass for bleeding and processing by manual, main data as following:

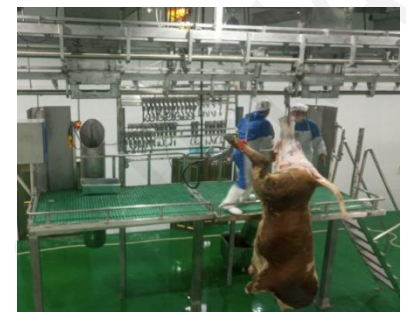
- 1)-Rail Height: 4.2-5m
- 2)-Component and material:
 - ✓ Hot galvanized steel 12# double channel steel and special hanger
 - ✓ Hot galvanized steel hanger (distance 600mm)
 - ✓ Hot galvanized steel Connecting bolt
 - ✓ SS304 tube rail (ϕ 60*4mm)



1.7	Cattle carcass re-hanging platform	QE-C205-I	Set	1
------------	---	------------------	------------	----------

Which used to for carcass transfer hind hooves cutting , main data as following:

- 1)-Dimension: 2000*1500*2500mm (L*W*H)
- 2)-Component and material:
 - ✓ Hot galvanized steel support column (diameter: ϕ 159mm)
 - ✓ Hot galvanized steel main frame (60*40*2mm)
 - ✓ SS304 ladder and handrail
 - ✓ Anti-skid plastic square (25mm)
 - ✓ Include one set hand washing and knives sterilizing device



1.8	Hoof sliding chute	QE-C206	Set	1
------------	---------------------------	----------------	------------	----------

Which main used for cattle hind hooves sliding to collect trolley, main data as following:

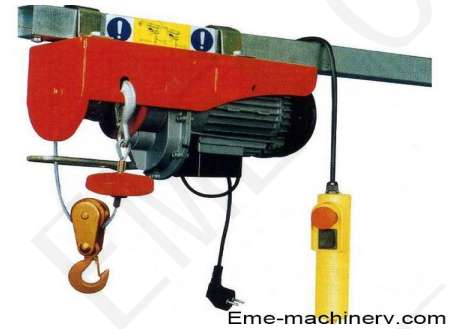
- 1)-Dimension: ϕ 350*2400mm(D*L)
- 2)-Thickness :2mm
- 3)-Material: SS304






1.9	Cattle carcass electric transfer hoist	QE-C201-II	Set	1
------------	---	-------------------	------------	----------

Which used to transfer cattle carcass to process convey rail, main data as following:

- 1)-Rated voltage/Phase/Frequency: 380V/3P/50HZ
- 2)-Power: 1.5Kw
- 3)-Lifting height:4M
- 4)-Lifting speed:8m/min
- 5)-Max capacity: 45 Heads per hour
- 6)-Hoisting ability: 1000kg
- 7)-Component and material:
 - ✓ Electric hoist
 - ✓ Hot galvanized steel automatic hanging device
 - ✓ Heavy hook
 - ✓ Low pressure control switches
 - ✓ Electric controlling device: Schneider of France or Siemens of Germany



2.2、Cattle carcass processing and deboning equipment unit

2.1	Cattle carcass processing and chilling manual convey rail(Tube-rail)	QE-C301-II	M	74
Which used to convey cattle carcass for chilling/quarter carcass cutting/dispatch by manual, main data as following:				
<ol style="list-style-type: none"> 1)-Rail Height: 3.6-4.2m 2)-Component and material: <ul style="list-style-type: none"> ✓ Hot galvanized steel C-channel (12#) and hanger (Distance:600mm) ✓ Hot galvanized steel connecting bolt (Thickness:10mm) ✓ Hot galvanized steel threaded screw (Diameter: 20mm) ✓ SS304 tube rail (φ 60*3mm) 				
2.2	Tube rail pulley hook for cattle carcass	QE-C238-I	Set	125
Which main used to hang cattle carcass for slaughtering process, main data as following:				
<ol style="list-style-type: none"> 1)-Weight: About 3.78kg 2)-Dimension: 480*80*70mm (L*W*H) 3)-Tube diameter: 40-60mm 4)-Carrying Capacity: 1500Kg 5)-Component and material: <ul style="list-style-type: none"> ✓ SS304 main frame hanger and hooks (φ 22mm) ✓ SS304 pulley and bearing 				
2.3	Cattle carcass breast skinning fixed platform	QE-C211-I	Set	1
Which main used for cattle brisket skinning, main data as following:				
<ol style="list-style-type: none"> 1)-Dimension: 1600*1000*1200mm (L*W*H) 2)-Component and material: <ul style="list-style-type: none"> ✓ Hot galvanized steel support column (diameter: φ 159mm) ✓ Hot galvanized steel main frame (60*40*2mm) ✓ Hot galvanized steel ladder and handrail ✓ Anti-skid plastic square (25mm) ✓ Include one set hand washing and knives sterilizing device 				
2.4	Cattle skinning elevator (Single-column)	QE-C214-II	Set	2

Which main used to auxiliary skin puller to complete removed skin, main data as following:

- 1)-Dimension: 1000*800*3800mm (L*W*H)
- 2)-Lifting height:1600mm
- 3)-Work pressure:0.6-0.8Mpa
- 4)-Air consume: 185L/Time
- 5)-Elevating ability: 125Kg
- 6)-Component and material:
 - ✓ Hot galvanized steel support column (100*100mm) and main frame
 - ✓ Aluminum alloy support plate (Thickness: 3mm)
 - ✓ SS304 handrail
 - ✓ Aluminum alloy cylinder
 - ✓ SS304 hand washing bin and knives sterilizing device (Heating: Electric)
 - ✓ Pneumatic controlling switches



2.5	Cattle skin hydraulic puller	QE-C212	Set	1
------------	-------------------------------------	----------------	------------	----------

Which main used to pull cattle skin by automatic, main data as following:

- 1)-Working principle: Hydraulic and electric
- 2)-Rated voltage/Phase/Frequency: 380V/3P/50HZ
- 3)-Power: 5.5+4Kw
- 4)-Hydraulic cylinder stroke:2.2m
- 5)-Work pressure: 6Mpa
- 6)-Max capacity: 60cattle/h
- 7)-Component and material:
 - ✓ Electric driving motor : IP64
 - ✓ Electric cable: RVV/3+1/4M²
 - ✓ Electric controlling device: Original Chinese brand
 - ✓ Oil cylinders: Air Tac of Taiwan
 - ✓ Hot galvanized steel support column (282*282mm)
 - ✓ SS304 skin hide roller (D:360mm) and chain
 - ✓ Cloth-type rubber hydraulic oil pipe
 - ✓ Hydraulic pressure station and controlling box
 - ✓ Low voltage control switches



2.6	Cattle skin transfer trolley	QE-C216-II	Set	1
------------	-------------------------------------	-------------------	------------	----------

Which main used to collect cattle skin, main data as following:

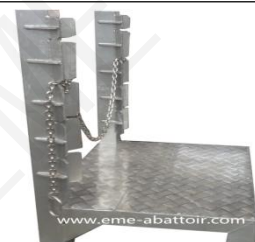
- 1)-Dimension: 1000*600*300mm (L*W*H)
- 2)-Component and material:
 - ✓ SS304 frame (50*50*2mm)
 - ✓ SS304 plate (2mm)
 - ✓ Strongly nylon wheel(4pcs)



2.7	Cattle fore legs fixed and breast opening platform	QE-C215-I	Set	1
------------	---	------------------	------------	----------

Which used to fixed cattle fore legs for skinning and breast opening, main data as following:

- 1)-Dimension: 1000*800*1400mm (L*W*H)
- 2)-Component and material:
 - ✓ Hot galvanized steel square tube (80*80*2mm)
 - ✓ Hot galvanized steel checkered plate
 - ✓ SS304 chain



2.8	Cattle brisket cutting saw	QE-C220-E1	Set	1
------------	-----------------------------------	-------------------	------------	----------

Which used to cut cattle carcass breast bone for evisceration, main data as following:

- 1)-Rated voltage/Phase/Frequency: 380V/3P/50HZ
- 2)-Power: 0.37Kw
- 3)-Blade length:300mm
- 4)-Weight:3.2kg
- 5)-Max capacity: 50Heads per day
- 6)-Component and material: Balance and Transformer



2.9	Cattle viscera removed platform	QE-C221-III	Set	1
------------	--	--------------------	------------	----------

Which main used for cattle white viscera removed, the detail data as following:

- 1)-Dimension: 2000*1000*1350mm(LXWXH)
- 2)-Component and material:
 - ✓ Hot galvanized steel support column (diameter: ϕ 159mm)
 - ✓ Hot galvanized steel main frame (60*40*2mm)
 - ✓ SS304 ladder and handrail
 - ✓ Anti-skid plastic square (25mm)
 - ✓ Hand washing and knives sterilizing device*1set



2.10	Cattle white viscera chute	QE-C223-I	Set	1
-------------	-----------------------------------	------------------	------------	----------

Which main used to collection cattle white viscera and slide convey machine, main data as following:

- 1)-Dimension: 1600*1200/750mm(L*W)
- 2)-Component and material:
 - ✓ SS304 main frame (60*40*2mm)
 - ✓ SS304 plate (Thickness: 2mm)



2.11	Cattle white viscera cleaning table	QE-C223-III	Set	1
-------------	--	--------------------	------------	----------

Which main used to collection white viscera for cleaning, main data as following:

- 1)-Dimension: 5000*800/600*800mm(L*W*H)
- 2)-Deep:200mm
- 3)-Component and material:
 - ✓ SS304 main frame (50*50*5mm)
 - ✓ SS304 table board(2mm)
 - ✓ SS304 adjustable foot
 - ✓ Drain hole



2.12	Cattle viscera trimming table	QE-L103	Set	1
-------------	--------------------------------------	----------------	------------	----------

Which used for beef/mutton meat trimming and packaging, main data as following:

- 1)-Dimension: 1800*900*800mm(L*W*H)
- 2)-Component and material:
 - ✓ SS304 square tube (38*38*2mm)
 - ✓ SS304 table board (2mm)
 - ✓ SS304 adjustable foot



2.13	Cattle stomach cleaning machine	QE-C225	Set	1
-------------	--	----------------	------------	----------

Which main used to cleaning the dirty inside of livestock stomach, main data as following:

- 1)-Rated voltage/Phase/Frequency: 380V/3P/50HZ
- 2)-Power: 4/5.5Kw
- 3)-Dimension: 1500*1000*900mm(L*W*H)
- 4)-Capacity: 60pcs cattle stomach per hour and 300sheep stomach per hour
- 5)-Water temperature: 55-60°C
- 6)-Speed: adjustable speed
- 7)-Component and material:
 - ✓ Electric driving motor
 - ✓ Electric controlling device
 - ✓ SS304 main frame and out put door and drive shaft
 - ✓ SS304 and waterproof electric controlling box
 - ✓ SS304 water input and output pipe
 - ✓ SS304 barrel type washing chamber and circular rotary grid
 - ✓ Hot and cold water mixing valve



2.14	Cattle head and red viscera transfer trolley	QE-C229-I	Set	1
-------------	---	------------------	------------	----------

Which main used to collection cattle/sheep head and red viscera, main data as following:

- 1)-Dimension:1500*800*1600mm(L*W*H)
- 2)-Capacity: 54pcs hanger
- 3)-Component and material:
 - ✓ SS 304 main frame (38*38*2mm)
 - ✓ SS304 hooks (φ 12mm) and
 - ✓ SS304 water collection tray (2mm)
 - ✓ Nylon wheel (2pcs Omni-directional wheel)



2.15	Cattle carcass band splitting saw	QE-C230-I	Set	1
-------------	--	------------------	------------	----------

Which main used to cut complete cattle carcass to half party, main data as following:

- 1)-Original: EME of China
- 2)-Rated voltage/Phase/Frequency: 380V/3P/50HZ
- 3)-Power: 2.2Kw
- 4)-Dimension: 1300*400*500mm(L*W*H)
- 5)-Blade length: 3100mm
- 6)-Cutting depth: 500mm
- 7)-Weight: 89kg
- 8)-Component and material:
 - ✓ Electric controlling device
 - ✓ Spring balance (70-75Kg)
 - ✓ Transformer
 - ✓ Ten pieces blade



2.16	Cattle carcass band splitting saw sterilizing	QE-C230-III	Set	1
-------------	--	--------------------	------------	----------

Which main used for cattle carcass band splitting saw sterilizing, main data as following:

- 1)-Water heating: steam heating
- 2)-Temperature: 82°C
- 3)-Dimension: 1060*360*1200mm(L*W*H)
- 4)-Component and material:
 - ✓ SS304 main frame (60*40*2mm)
 - ✓ SS304 plate (Thickness: 2mm)



2.17	Cattle half carcass splitting pneumatic elevator(Dual-column)	QE-C233	Set	1
-------------	--	----------------	------------	----------

Which main used to support staffs for splitting, main data as following:

- 1)-Dimension: 2000*1000*5300mm (L*W*H)
- 2)-Lifting height:1600mm
- 3)-Work pressure:0.6-0.8Mpa
- 4)-Air consume: 370L/Time
- 5)-Elevating ability: 250Kg
- 6)-Component and material:
 - ✓ Hot galvanized steel support column (Diameter: ϕ 108mm) and main frame (60*40*2mm)
 - ✓ Aluminum alloy support plate (Thickness: 3mm) and ladder
 - ✓ Anti-skid fiberglass grating (Square: 30mm*thickness 30mm)
 - ✓ SS304 handrail and water diversion pillar
 - ✓ Aluminum alloy cylinder
 - ✓ SS304 hand washing bin and knives sterilizing device (Heating: Electric) and apron washing device with tap
 - ✓ Pneumatic controlling switches



2.18	Cattle hind legs separated device	QE-C232	Set	1
-------------	--	----------------	------------	----------

Which main used to separate cattle hind legs for splitting , main data as following:

- 1)-Legs separate distance:800mm
- 2)-Air consume: 92L/Time
- 3)-Component and material:
 - ✓ Hot galvanized steel connector
 - ✓ SS304 track and slider
 - ✓ Pneumatic control system and accessories
 - ✓ SS304 track and slider
 - ✓ 1st leg pneumatic fixation and 2nd leg pneumatic separator



2.19	Cattle carcass inspection/trimming/cleaning fixed platform	QE-C221-VI	Set	1
-------------	---	-------------------	------------	----------

Which main used to for cattle carcass inspect/trimming/cleaning, the detail data as following:

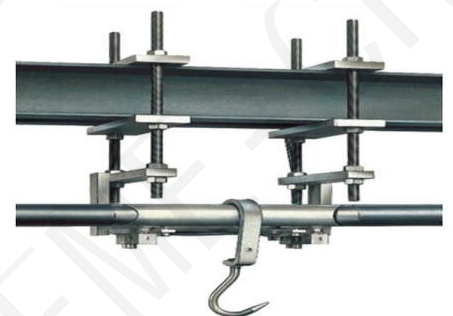
- 1)-Dimension: 1600*800*1200mm(L*W*H)
- 2)-Component and material:
 - ✓ Hot galvanized steel support column (diameter: ϕ 159mm) and main frame (60*40*2mm)
 - ✓ SS304 ladder and handrail
 - ✓ Anti-skid plastic square (25mm)
 - ✓ Hand washing and knives sterilizing device*1set



2.20	Carcass rail weight system	QE-C235	Set	1
-------------	-----------------------------------	----------------	------------	----------

Which main used to weight carcass before dispatching, main data as following:

- 1)-Weight rail length: 1000 mm
- 2)-Maximum Weight: 600 Kg
- 3)-Differentiate Capacity: 50g
- 4)-Component and material:
 - ✓ SS304 connectors and bolts and tube rail (ϕ 60*4mm)
 - ✓ High precision sensors (2Pcs)
 - ✓ Weighing display with printer and LCD digital display



2.21	Cattle carcass slope unloading machine	QE-C302-II	Set	1
-------------	---	-------------------	------------	----------

Which used to lift fore-quarter from 1.2meter level to 2.4meter level, main data as following:

- 1)-Rated voltage/Phase/Frequency: 380V/3P/50HZ
- 2)-Power: 1.5Kw
- 3)-Length: 3500mm
- 4)-Lift height:1200mm
- 5)-Component and material:
 - ✓ Hot galvanized steel 12# channel steel with rail hanger & plate chain with pusher dog
 - ✓ SS304 tube rail (ϕ 60*4mm)
 - ✓ High polymer wear-resistant walking wheel
 - ✓ Driving device and tension device



2.22	Cattle carcass slope lifting machine	QE-C302-I	Set	1
-------------	---	------------------	------------	----------

Which main used to unload carcass from high convey rail (H=3.6m) to low convey rail (H=2.4m) for boneless, main data as following:

- 1)-Rated voltage/Phase/Frequency: 380V/3P/50HZ
- 2)-Power: 1.5Kw
- 3)-Length: 3500mm
- 4)-Lift height:1200mm
- 5)-Component and material:
 - ✓ Hot galvanized steel 12# channel steel with rail hanger & plate chain with pusher dog
 - ✓ SS304 tube rail (ϕ 60*4mm)
 - ✓ High polymer wear-resistant walking wheel
 - ✓ Driving device and tension device



2.23	Quarter carcass reciprocating cut saw	QE-C303-II	Set	1
-------------	--	-------------------	------------	----------

Which main used to cut half cattle carcass to quarter carcass, the detail data as following:

- 1)-Rated voltage/Phase/Frequency: 380V/3P/50HZ
- 2)-Power: 0.86Kw
- 3)-Controlling voltage: 24VDC
- 4)-Length: 800mm
- 5)-Blade length: 400mm
- 6)-Weight: 65kg
- 7)-Component and material:
 - ✓ Balance
 - ✓ Transformer



2.24	Quarter carcass cut saw sterilizing device	QE-C303-III	Set	1
-------------	---	--------------------	------------	----------

Which main used for quarter carcass cut saw sterilizing, main data as following:

- 1)-Water heating: steam heating
- 2)-Temperature: 82°C
- 3)-Dimension: 1060*360*1200mm(L*W*H)
- 4)-Component and material:
 - ✓ SS304 main frame (60*40*2mm)
 - ✓ SS304 plate (Thickness: 2mm)



2.25	Carcass segmented cut saw	QE-C310	Set	1
-------------	----------------------------------	----------------	------------	----------

Which main used to cut cattle carcass into section part, main data as following:

- 1)-Rated voltage/Phase/Frequency: 380V/3P/50HZ
- 2)-Power: 1.5Kw
- 3)-Motor rpm:1440r.p.m
- 4)-Blade Dimension:2400*16mm
- 5)-Cutting speed:18.3m/sec
- 6)-Cut height: 300mm
- 7)-Dimension work plan:560X640mm
- 8)-Dimension:746*671*1743mm(L*W*H)
- 9)-Component and material:
 - ✓ SS304 body support
 - ✓ SS304 adjusting foot



2.26	Trimming and packaging table	QE-L103	Set	3
-------------	-------------------------------------	----------------	------------	----------

Which used for beef/mutton meat trimming and packaging, main data as following:

- 1)-Dimension: 1800*900*800mm(L*W*H)
- 2)-Component and material:
 - ✓ SS304 square tube (38*38*2mm)
 - ✓ SS304 table board (2mm)
 - ✓ SS304 adjustable foot



2.27	Vacuum packaging machine (DZ-6)	QE-L116-I	Set	1
-------------	--	------------------	------------	----------

Which used for beef/mutton/pork/poultry meat vacuum packaging, main data as following:

- 1)-Rated voltage/Phase/Frequency: 380V/3P/50HZ
- 2)-Power:2.2Kw
- 3)-Max packing size:600*550mm
- 4)-Vacuum room Dimension: 720*625*140mm(L*W*H)
- 5)-Seal: 600*(8-10)*4mm
- 6)-Capacity: 1000-1500bags per hour
- 7)-Dimension: 1420*750*950mm
- 8)-Component and material:
 - ✓ SS304 frame and vacuum cover
 - ✓ High quality vacuum pump
 - ✓ Intelligent control panel



2.28	40Feet freezing container(USED)	QE-C40HQ	Set	1
-------------	--	-----------------	------------	----------

Which main used for cattle abattoir, the detail data as following:

- 1)-Style and Condition: 40HQ and Second Hand
- 2)-Manufactured Year: 2009-2010
- 3)-Dimension: 12190*2440*2900mm (L*W*H)
- 4)-Net Weight: 4200Kg
- 5)-Volume: 67.68M³
- 6)-Door Size: 2340*2380mm (W*H)
- 7)-Manufactured by International company
- 8)-Maximum Gross Weight: 34000Kgs/74960LBS
- 9)-Aloow Stack WT 1.8G: 227500Kgs/501,550LBS
- 10)-Packing Test Load Value: 15240Kgs/33600LBS
- 11)-Compressor Brand: Thermo King of American



2.29	Standard trolley	QE-L123	Set	1
-------------	-------------------------	----------------	------------	----------

Which main used to collect livestock by products and meat, main data as following:

- 1)-Volume:200L
- 2)-Dimension: 600*600*600mm(L*W*H)
- 3)-Component and material:
 - ✓ Stainless steel tank(2mm)
 - ✓ Bottom fillet structure
 - ✓ Strongly nylon wheel(4pcs)



2.30	Hand washing and knife sterilizing device	QE-L202-I	Set	1
-------------	--	------------------	------------	----------

Which main used to clean hand and knives sterilizing, main data as following:

- 1)-Heating type: Electric heating
- 2)-Operate type: Foot switch
- 3)-Knives sterilizing water temperature: 82°C
- 4)-Component and material:
 - ✓ Stainless steel shell(2mm)
 - ✓ High quality tap
 - ✓ Water supply interface and drain valve
 - ✓ Rotary thermostat



2.31	Hoof de-hairing machine	QE-C209	Set	1
-------------	--------------------------------	----------------	------------	----------

Which main used for hooves automatic dehairing, main data as following:

- 1)-Rated voltage/Phase/Frequency: 380V/3P/50HZ
- 2)-Power: 4Kw
- 3)-Capacity:
 - ✓ Cattle hooves: 360pcs per hour
 - ✓ Sheep/goat hooves: 1440pcs per hour
- 4)-Diameter of dehairing cylinder:1.2m
- 5)-Water temperature: 58-62°C m
- 6)-Component and material:
 - ✓ Stainless steel frame base and cylindrical shell and circular rotary grid
 - ✓ Hot and cold water mixing valve
 - ✓ Stainless steel waterproof electric control box



2.32	Livestock killing knife	QE-L112	Pc	1
-------------	--------------------------------	----------------	-----------	----------

- 1)-Material:Stainless steel
- 2)-Size:30.5*17.7*3.3cm (L*Blade length*W)
- 3)-Thick back: 2.6mm
- 4)-Weight: 132g



- 1)-Material:Stainless steel
- 2)-Size:28.6*15.8*3.1cm (L*Blade length*W)
- 3)-Thick back: 2.8mm
- 4)-Weight: 117g



- 1)-Material:Stainless steel
- 2)-Size:26.6*14.2*3.3cm (L*Blade length*W)
- 3)-Thick back: 2.6mm
- 4)-Weight: 111g



- 1)-Material:Stainless steel
- 2)-Size:27*14.2*3cm (L*Blade length*W)
- 3)-Thick back: 2.4mm
- 4)-Weight: 97g



- 1)-Material:Stainless steel
- 2)-Size:29.5*17.5*3.9cm (L*Blade length*W)
- 3)-Thick back: 2.8mm
- 4)-Weight: 134g



- 1)-Material:Stainless steel
- 2)-Size:27.8*15.5*4cm (L*Blade length*W)
- 3)-Thick back: 2.8mm
- 4)-Weight: 128g



- 1)-Material:Stainless steel
- 2)-Size:30.7*18.3*5.3cm (L*Blade length*W)
- 3)-Thick back: 2.1mm
- 4)-Weight: 148g



- 1)-Material:Stainless steel
- 2)-Size:28*14.9*2.6cm (L*Blade length*W)
- 3)-Thick back: 2.4mm
- 4)-Weight: 97g



- 1)-Material:Stainless steel
- 2)-Size:33.5*21*3.4cm (L*Blade length*W)
- 3)-Thick back: 2.6mm
- 4)-Weight: 134g



2.33	Stainless steel gloves	QE-L114	Set	1
-------------	-------------------------------	----------------	------------	----------

Which main used to prevent staffs hand avoid hurt when processing livestock carcass, main data as following:

- 1)-Component and material:
 - ✓ Stainless steel
- 2)- Size:
 - ✓ 3 set * M
 - ✓ 1 set *L
 - ✓ 1 set *S
 - ✓ 1 set *xxs

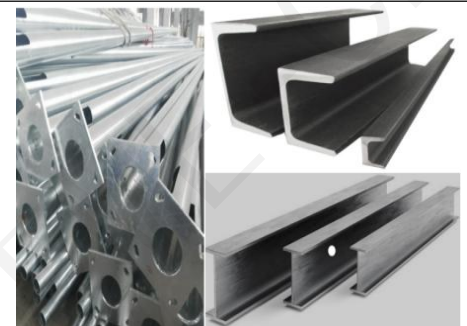


2.3、Cattle abattoir auxiliary equipment and installation material and accessories unit

3.1	Cattle abattoir equipment installation material	QE-C403	Ton	9
------------	--	----------------	------------	----------

Which main used for cattle abattoir equipment supporting and hanging, main data as following:

- 1)-Material: hot galvanized steel
- 2)-Column:
 - ✓ Model: DN121
 - ✓ Bottom plate: 12mm, dimensions:300*300mm and 400*400mm, 10mm reinforced plate
- 3)-I-beam:
 - ✓ Model: #25a, #22 and #18
 - ✓ Channel beam: #16, #14 and #10



3.2	Cattle abattoir equipment installation accessories	QE-C404	Set	1
------------	---	----------------	------------	----------

Which main used for cattle abattoir equipment installation, main data as following:

1)-Component and material:

- ✓ Hot galvanized rigid Connectors
- ✓ Hot galvanized connecting Plate
- ✓ Hot galvanized connecting screw
- ✓ Hot galvanized bolt and nut
- ✓ Expansion bolt

